

# LF24W Fire Alarm System: Visual Alarm Device and Sounder Installation Instructions

LF24W is an audio/visual warning panel, available in different models and suited for any emergency situation such as fire, flooding, gas leaks, etc., where visual and audio information is needed

## Assembly Instructions

- Make four holes into the wall to fit the holders (Fig. 2 ❶)
- Fix the mounting box with the four screws (Fig. 2 ❷)
- Connect the power supply to the terminals (Figure 1)
- In the sounder is not needed, connect the SILENT jumper (Fig. 1)
- Fix the central part to the mounting box with the four screws (Fig. 2 ❸)
- Place and press the external cover and fix it by screws (Fig. 2 ❹)

Figure 1

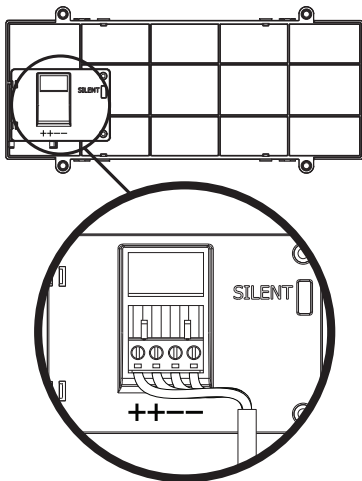
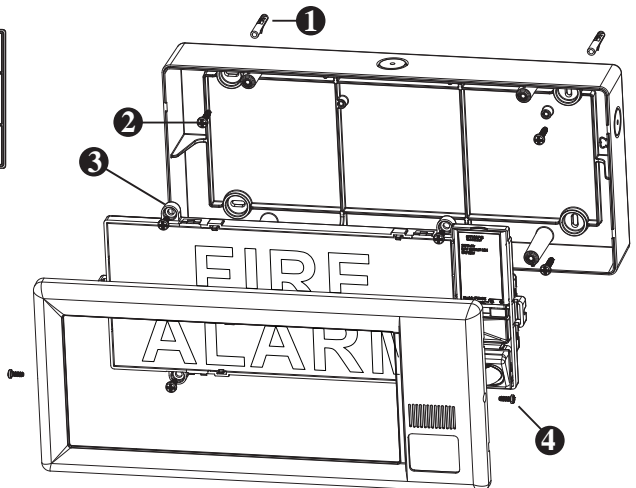


Figure 2



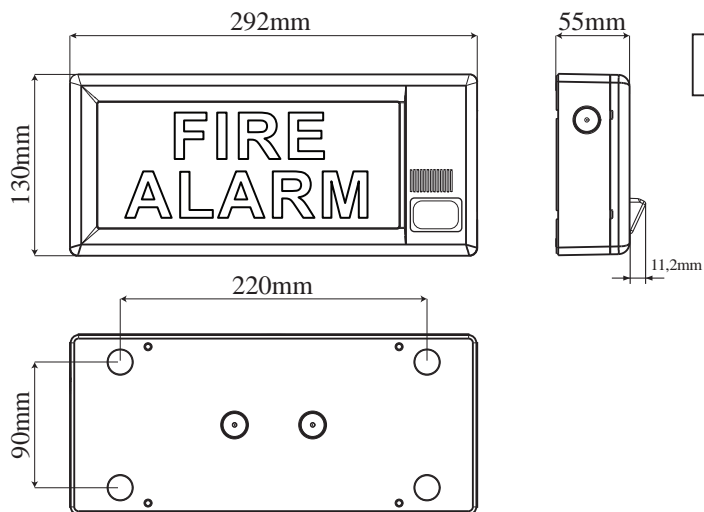
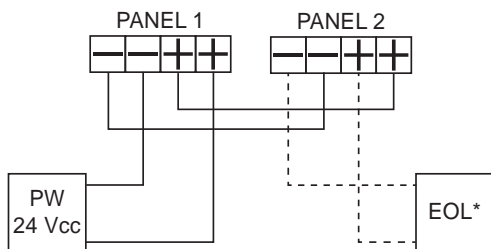


Figure A

## Technical Specifications

|                                  |  |
|----------------------------------|--|
| Flammability grade               | V2   |
| Protection Class                 | IP21C  |
| Nominal Voltage                  | 24Vd.c. (min 18 Vd.c., max 30Vd.c.)  |
| Line consumption 24V             | 50mA   |
| Line consumption 8V              | 10uA max   |
| Mounting Height                  | 4,6m max   |
| Code (square base)               | W-4,6-9,1  |
| Codice (rectangular base Fig. A) | 0-4,6-9,1-9,9  |
| Type of connection               | By terminals   |
| Dimensions                       | 292x130x55mm (L x H x P)   |
| Flash Light Color                | White  |
| Operating temperature            | From -10°C to +55°C  |
| Optical specifications           | Flash frequency: 1Hz   |
| Class                            | TYPE A   |
| Sounder specifications           | Sound power (max, 90° plan V): >90dB(A) @ 1m<br>Buzzer frequency: 2,8KHz<br>Sound pulse frequency: 1Hz |

## Connection



\*POLARITY INVERSION or  
LOW VOLTAGE SURVEY (max 8V)



0370-CPR-6119  
EN 54-23:2010  
EN 54-3:2001 +  
A1:2002 +  
A2:2006

**Synaps Technology Srl**

Via Pietraferata, 9/1  
34147 - Trieste  
ITALY