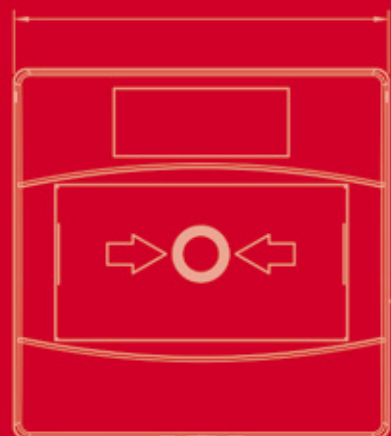
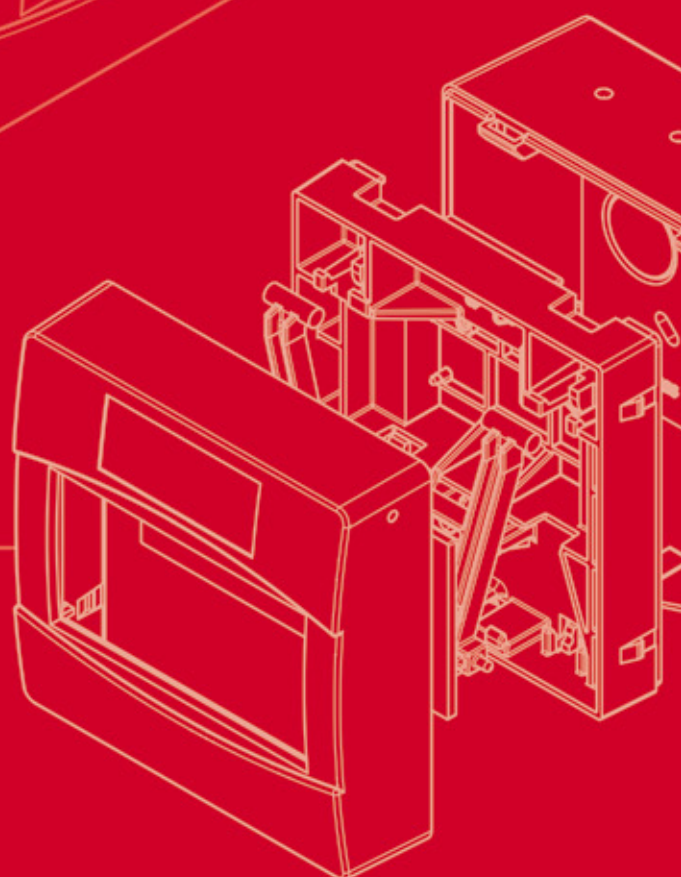
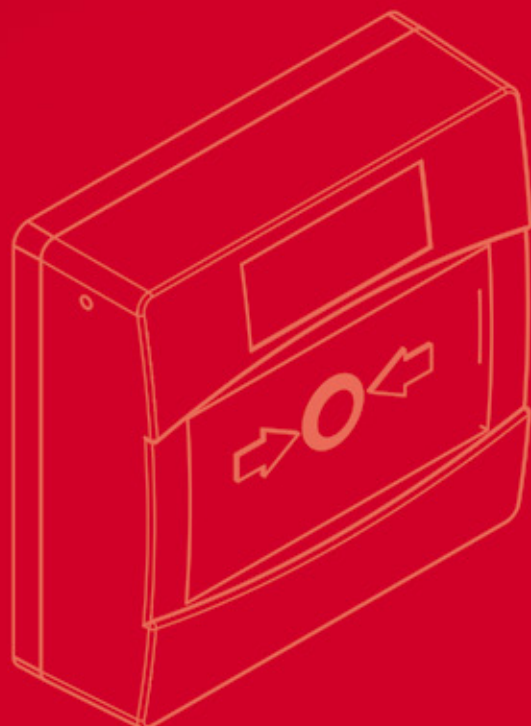
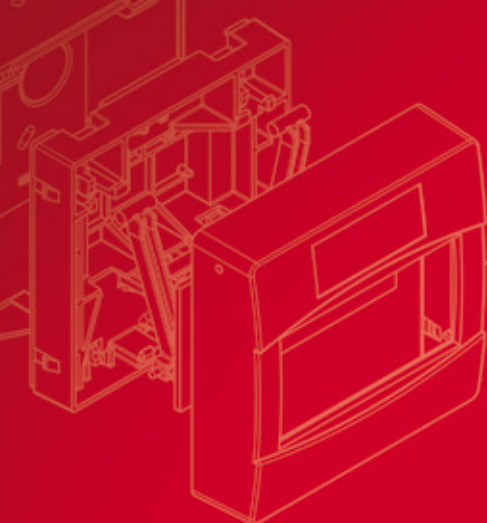




SyCALL

PRODUCT
FAMILY







Synaps Technology is an Italian independent designer and manufacturer of Fire Alarm and Signalling products and a reliable partner in product development for a lot of main actors in the field of Fire & Detection.

Its multidisciplinary expertise, from design to technical implementation, has led Synaps Technology to be the pioneer of innovation in product design and a milestone for competitors, obtaining widespread success and being recognized as a top-quality company.

The new born sleek and aesthetically pleasant patented alarm sounder, with its redesigned acoustic horn and lowest profile, finally, after twenty years, awakes the siren field with a breakthrough innovation.

A full range of patented call points and a GSM touchscreen phone dialer are some of the most worth mentioning products, completing the line of leading-edge solutions developed.

Excellent technical support, customer service and effective delivery are offered too, as well as customization, own-labelling and OEM services on request.



SyCALL

SyCALL is a resettable manual call point with unique and innovative features. It has been designed to obtain maximum visibility, high reliability in operation and pleasant aesthetical appearance.

PATENTED



KEY BENEFITS

- Very high visibility of the alarm condition
- New efficient and reliable mechanism
- High impact resistant ABS glass fiber material
- Approved to EN 54-11
- Fully patented

LIKE A GLASS

When the resettable element is pressed the spring mechanism mimics the feel of a break glass and the resettable element goes back. A completely new action system gives high performance and guarantees the alarm detection in every condition.



RISING ALARM FLAG

A reflective polyester flag appears in the bottom of the operating face, providing the highest levels of visibility for the user. At the heart of the call point a spring free mechanism is used to operate the flag and the switch via a patented design. This allows long life and trouble free operation.



FIRE RING

A led will brightly illuminate a ring in the center of the active area.

This innovative design, based on a special light pipe, provides very high visibility of alarm condition.

The special light pipe design allows the alarm condition to be viewed over a wide angle (170 degrees) thus providing the highest level of visibility.



RESETTABLE

The **SyCALL** is easily reset using the special key provided that allows, with a simple twist action, to restore the normal operating condition.

The same key is used to access the electrical connections.



CONVENTIONAL SERIES

Six modes of operation are achievable simply by choosing appropriate internal connection terminals:

Switch only | **Switch + LED** | **Switch + R1** | **Switch + R2** | **Switch + LED + R1** | **Switch + LED + R2**

All the configurations can be easily accessed from screw terminals. The internal printed circuit board is fully enclosed and protected. It integrates a current limiter that maintains a steady supply to the LED.



ADDRESSABLE SERIES

Customers specific PCBs can easily be fitted in a specifically designed housing.
Your original equipment combined with the unique features of **SyCALL!**



QUICK AND EASY INSTALLATION

The front operating element simply snaps into place by pressing it, without the need of screw or any tools. The front element is released using the dedicated reset and removal tool supplied with each unit.

NOT IN USE label can be easily removed pulling it out with fingers.



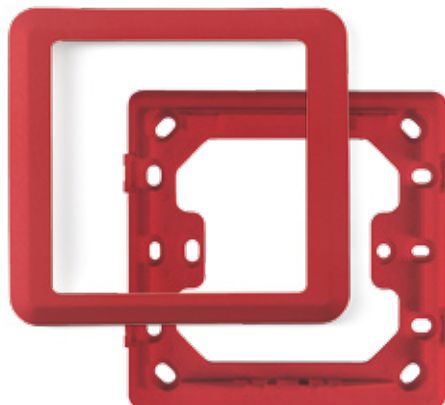
MOUNTING OPTIONS

It is possible to mount **SyCALL** directly to the wall with the back box or fastening it to a General Purpose Installation Box with the flush mount flange.

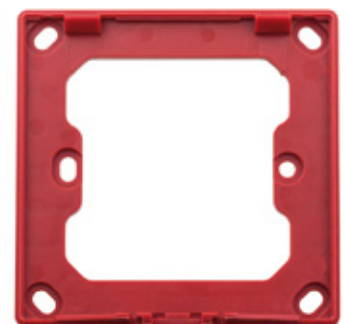
SURFACE MOUNT



FLUSH MOUNT WITH FRAME



FLUSH MOUNT



SyCALL CWC WATERPROOF SERIES IP67

The **SyCALL** CWC includes all the features of the standard call point plus the operating, capability to withstand difficult environmental conditions such as rain, high humidity and dust. A solid and appealing design, the **SyCALL** CWC's suitability for almost all difficult applications and being key-resettable are its strong points.

The **SyCALL** CWC retains the standard **SyCALL** features within a rugged weather-sealed moulded enclosure. The extended housing provides for symmetrical fixings on the front face of the unit and contributes to its physical protection for reliable operation.



Internally the front moulding is sealed to the rear thanks to a special bi-material membrane and held in place by the screw fixings. Easy access to the choice of terminals is maintained for installation and maintenance.

The rear surface mount box provides a selection of securing positions together with a choice of cable entries for the installer. A single top or twin bottom 20mm cable gland options are available with clear space within the box to aid easy termination. A screw terminal is included in the box to assist cable screen continuity if required.



SAFETY COVER

An optional transparent hinged cover is available. The cover protects **SyCALL** against accidental operation but is still easily operated in case of real emergency.



COLORS

Call points are available in Red, Yellow, Green, Blu and White.







Via Pietraferata 9/1
34147 Trieste • ITALIA



+39 040 9896000



sales@synaps.it



www.synaps-technology.com